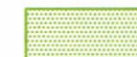





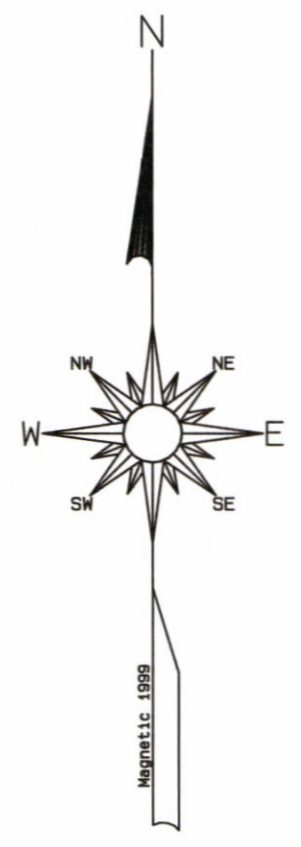


OFFICIAL ZONING MAP

TULPEHOCKEN TOWNSHIP

BERKS COUNTY, PENNSYLVANIA

-  ENVIRONMENTAL PROTECTION
-  VILLAGE CENTER
-  RURAL RESIDENTIAL
-  INDUSTRIAL AND COMMERCIAL
-  EFFECTIVE AGRICULTURAL PRESERVATION
-  GREEN ENERGY OVERLAY DISTRICT (GEO)



0' 1500' 3000' 4500'

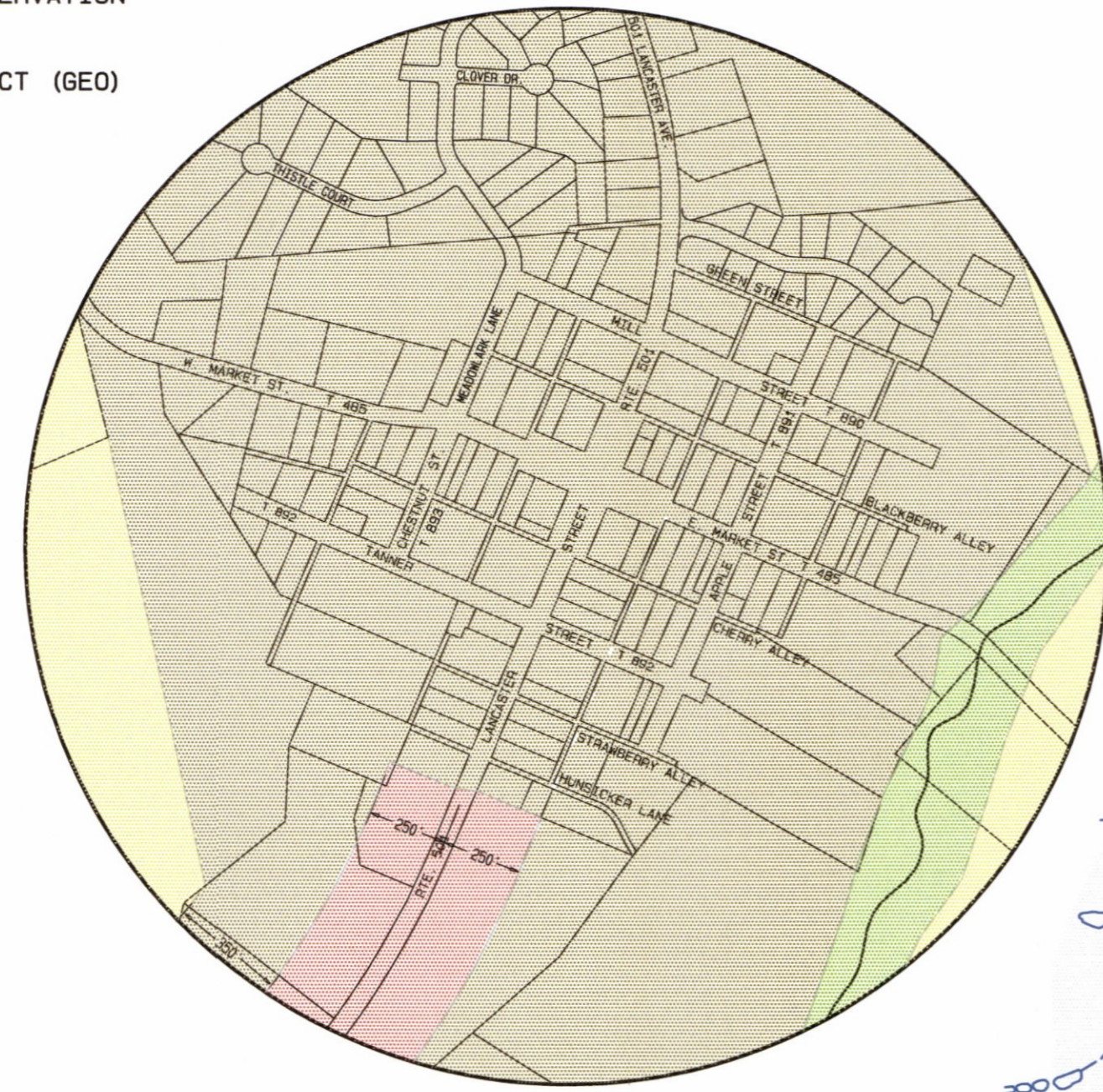
1" = 1500'

THIS IS TO CERTIFY THAT THIS IS THE OFFICIAL ZONING MAP OF THE TOWNSHIP OF TULPEHOCKEN, ADOPTED ON APRIL 8, 2013, WHICH SUPERSEDES ALL PRIOR ZONING MAPS OF THE TOWNSHIP, AS AMENDED AND CORRECTED ON Jan 8, 2024.

ATTEST:

Kathryn Judy
SECRETARY OF THE BOARD OF SUPERVISORS

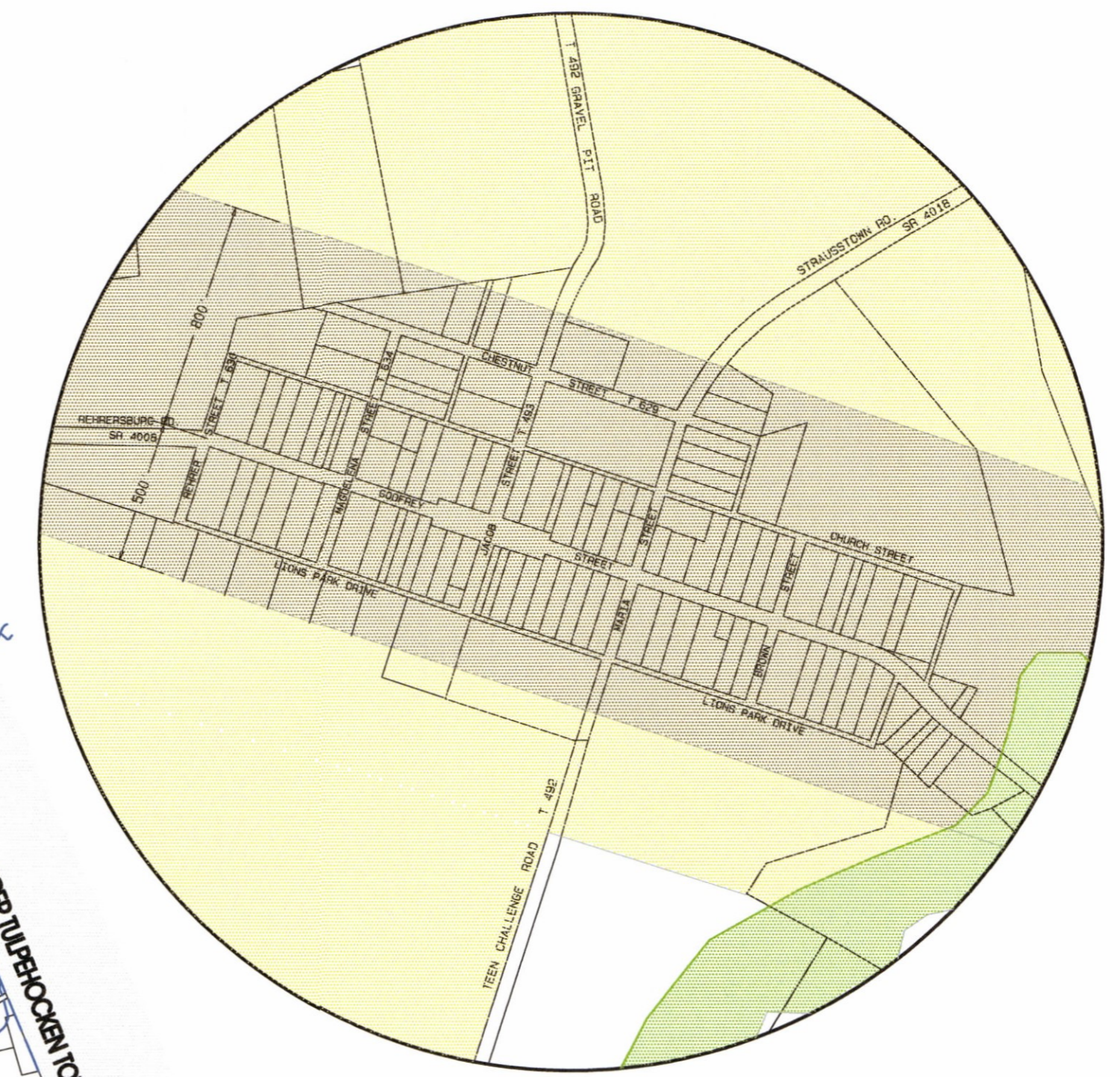
Mark A. Deib
CHAIRMAN OF THE BOARD OF SUPERVISORS



MT. AETNA

0' 500' 1000' 1500'

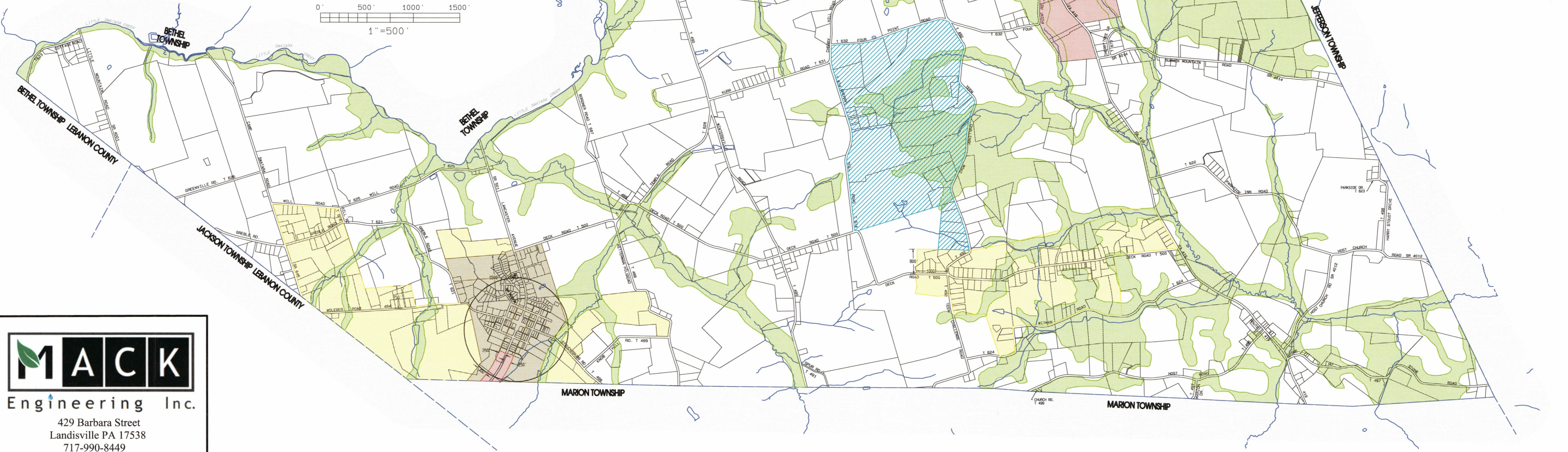
1" = 500'



REHRERSBURG

0' 500' 1000' 1500'

1" = 500'



MACK
Engineering Inc.

429 Barbara Street
Landisville PA 17538
717-990-8449